

# AccuStar® II/DAS 30

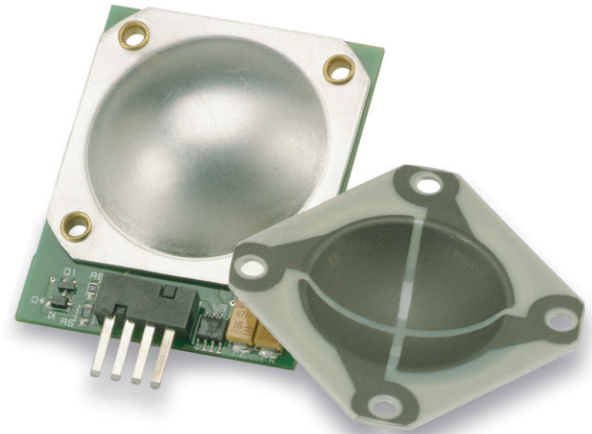
Mini Dual Axis Dome – DAS 30

## DESCRIPTION

The **AccuStar® II/DAS-30** miniature dual axis dome provides  $\pm 30^\circ$  operation in a unique PC board mountable design. The proprietary dome shaped construction features a fluid filled sensor technology that delivers a linear variable capacitance output proportional to the angle of the sensor.

An operating temperature range of  $-40^\circ$  to  $85^\circ\text{C}$  offers extended performance for use in rugged environmental conditions.

The AccuStar® II/DAS-30 miniature dual axis sensor is designed to meet the needs of OEM high volume designs for Automotive, Off-Road Vehicles and heavy equipment applications.



## FEATURES

- ◆ Compact Size
- ◆ Two Axis Sensing
- ◆ OEM/Low Cost Design

## APPLICATIONS

- ◆ Leveling Systems
- ◆ Automotive Security System
- ◆ Off-Road Vehicles

## performance specifications

Parameters	Frequency <3 kHz, Cs@50 pF
<b>Range</b>	
Total	$\pm 30^\circ$
Linear	$\pm 20^\circ$
<b>Gain</b>	0.27% per arc-degree $\pm 0.007\%$
<b>Temperature Coefficient</b>	
Scale	-0.10% per $^\circ\text{C}$ $\pm 0.15\%$
Null	$\pm 0.025^\circ$ per $^\circ\text{C}$
<b>Offset at Null</b>	$\pm 18^\circ$ arc-degree
<b>Frequency change</b>	$\pm 20\%$
<b>Linearity</b>	Monotonic
<b>Temperature Range</b>	
Operating	$-40^\circ\text{C}$ to $85^\circ\text{C}$
Storage	$-55^\circ\text{C}$ to $85^\circ\text{C}$

## dimensions

in (mm)

