



## Bourdon Tube Pressure Gauges

ABS Plastic or Painted Steel Case

Copper Alloy Wetted Parts

Center Back Mount Standard

Series Type 111.12

### Pressure Gauges

#### Application

Fluid medium which does not clog connection port or corrode copper alloy. Example: hydraulic and pneumatic systems, pumps, compressors, water systems, regulators.

#### Sizes (All sizes not stocked)

1½", 2", 2½" and 4" (40, 50, 63 and 100 mm)

3½" (94mm) with u-clamp only

#### Accuracy

± 3/2/3% of span (ASME B40.1 Grade B)

#### Ranges (All ranges not stocked)

Vacuum/Compound to 30" HG/0/200 psi

Pressure from 15 psi to 6000 psi

(max. 600 psi for 3½" size) or other equivalent of pressure or vacuum

#### Working Range

Steady: 3/4 of full scale value

Fluctuating: 2/3 of full scale value

Short time: full scale value

#### Operating Temperature

Ambient: -40°F to 140°F (-40°C to 60°C)

Media: max. 140°F (+60°C)

#### Temperature Error

Additional error when temperature changes from reference temperature of 68°F (20°C) ±0.4% for every 18°F (10°C) rising or falling. Percentage of span.

### Standard Features

#### Connection

Material: copper alloy

Center back mount (CBM)

1/8" or 1/4" NPT

#### Bourdon Tube

Material: copper alloy

30" Hg (Vac) to 600 psi C-type

800 psi to 6000 psi helical type

#### Movement

Copper alloy

#### Dial

White plastic with stop pin (1½", 2" & 2½")

White aluminum with stop pin (3½", 4")

Black or black and red lettering

#### Pointer

Black ABS plastic

(3½" black aluminum)

#### Case

Black ABS plastic (1½", 2" & 2½")

Black painted steel (3½" & 4")

#### Standard Scales

1½" psi, psi/kg/cm²

2" psi, psi/kpa, psi/kg/cm²

2½" psi/kpa, psi/kg/cm²

3½" psi

4" psi/kpa, psi/kg/cm²



#### Bezel

None (1½", 2", 2½", & 4")

Black-painted steel (3½" & 4")

#### Window

Snap-in acrylic (2½", & 4")

Threaded polycarbonate (3½")

#### U-clamp Option

1½": steel zinc plated u-clamp brackets with two threaded studs and ss polished profile ring

2" & 2½": steel zinc plated u-clamp brackets with two threaded studs and steel chrome plated profile ring

3½": steel zinc plated j-clamps, without ring

#### Order Options (min. order may apply)

Front flange (except for size 3½")

Accuracy ± 2/1/2% of span (ASME B40.1 Grade A)

Brass threaded or press fit restrictor

Plastic adaptor ring for non-metric panel cutout (2", 2½")

Slip-fit or friction ring

Case with blow-out plug

Glass window (not 3½")

Black painted steel case

Stainless steel case (not 3½")

Special case colors

Special connections limited to wrench flat area

Cleaned for oxygen service

Nickel plated connection

Medical specification

Rubber cover (2, 2½")

Custom dial layout

Other pressure scales available:

Bar, kPa, Mpa, Kg/cm² and dual scales

DIN standards

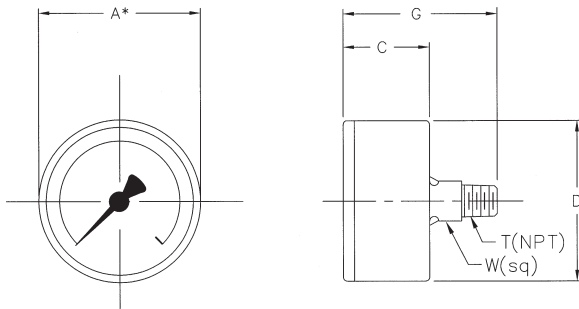
Red set pointer on aluminum dial or snap-on acrylic window

Red drag pointer (2½" only) (max. hand)

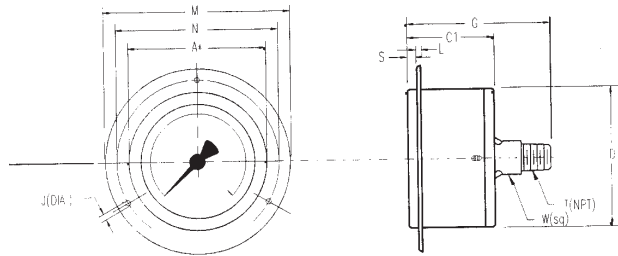
**APM111.12**

(APM01.01)

## Dimensions:



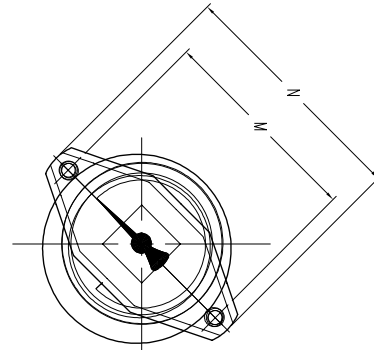
111.10 CBM



111.10 CBM / FF

## A\* Nominal Size

TYPE/SIZE	WEIGHT	KEY	A	C1	D	G (1)	T	W (2)
111.10 1.5"	0.16 lbs.	mm	40	26	41	46.5	1/8" or 1/4" NPT	14
		in	1.57	1.02	1.61	1.83		0.55
111.10 2"	0.22 lbs.	mm	50	26.5	49	47	1/8" or 1/4" NPT	14
		in	1.97	1.04	1.93	1.87		0.55
111.10 2.5"	0.29 lbs.	mm	63	27.5	61.5	48	1/8" or 1/4" NPT	14
		in	2.48	1.08	2.42	1.89		0.55
111.10 4" LM/CBM	0.46 lbs.	mm	100	31	99	49	1/8" or 1/4" NPT	14
		in	3.94	1.22	3.9	1.93		0.55

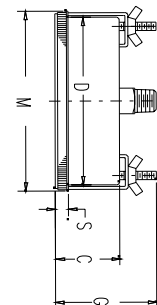
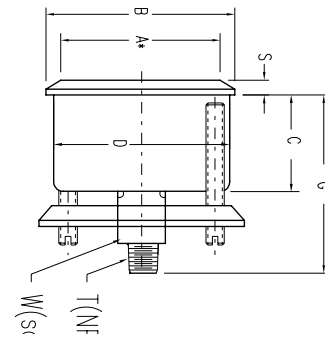


	Weight	Key	A*	C1	D	G(1)	J	L	M	N	S	T	W
111.10 2" CBM/FF	0.30 lbs.	mm	50	26.5	55	48	3.6	2	71	60	3.8	1/8" or 1/4" NPT	14
		in	1.97	1.04	2.17	1.89	0.14	0.08	2.8	2.36	0.15		.55
111.10 2.5" CBM/FF	0.40 lbs.	mm	63	27.5	68	52.1	3.6	2	85	75	3.8	1/8" or 1/4" NPT	14
		in	2.48	1.08	2.68	2.05	0.14	0.08	3.35	2.95	0.15		.55

## A\* NOMINAL SIZE

	WEIGHT	KEY	A*	B	C1	D	G	M	N	T	W
111.12 1.5" CBM/UC	0.27 lbs.	mm	40	44	24	40	45	47	59	1/8" or 1/4" NPT	14
		in	1.5	1.73	0.95	1.57	1.77	1.85	2.32		.55
111.12 2" CBM/UC	0.33 lbs.	mm	50	54	24	49	47	57	70	1/8" or 1/4" NPT	14
		in	2.0	2.13	0.95	1.93	1.85	2.24	2.76		.55
111.12 2 1/2" CBM/UC	0.35 lbs.	mm	63	67	26	62	53	78	91	1/8" or 1/4" NPT	14
		in	2.5	2.64	1.02	2.44	2.09	3.07	3.58		.55
111.12 3 1/2" CBM/UC	0.55 lbs.	mm	80	100	36	93	57	100	--		14
		in	3.5	3.93	1.42	3.66	2.24	3.93	--	1/4" NPT	.55

NOTE: (1) For gauges with 1/8" NPT connections,  
subtract 0.08 inches (2mm) from G dimension.



THE MEASURE OF  
**Total Performance™**

## Ordering Information:

State computer part number (if available) / type number / size /  
range / connection size and location / options required.

Specifications given in this price list represent the state of engineering at the time of printing.  
Modifications may take place and the specified materials may change without prior notice

05/01

**WIKAI**

**WIKAI Instrument Corporation**

1000 Wiegand Boulevard

Lawrenceville, Georgia 30043-5868

Tel: 770-513-8200 Fax: 770-338-5118

http://www.wika.com e-mail: info@wika.com